

**Edwards**  
Manufacturing Co. Est. 1875

# 60 TON "JAWS IV" IRONWORKER

4 LOADED STATIONS

DEDICATED  
NOTCHING STATION

OUR BEST VALUE!

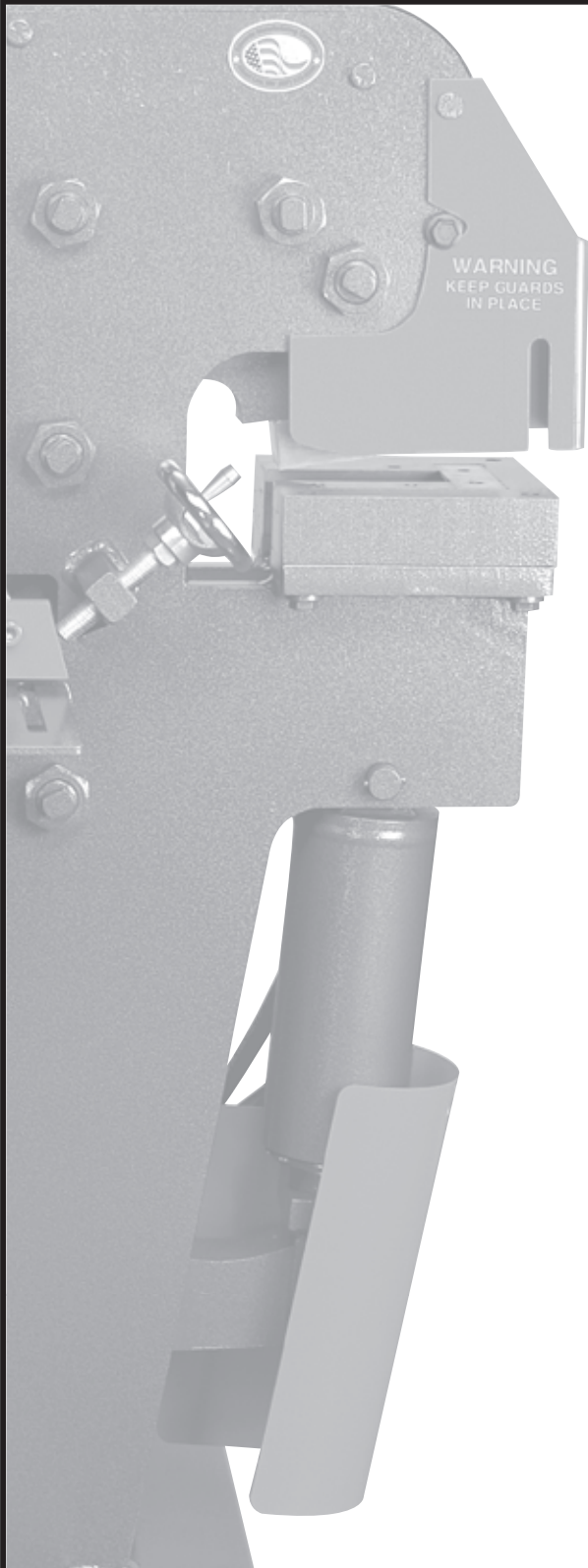


- ◆ P u n c h ◆
- ◆ N o t c h ◆
- ◆ S h e a r ◆
- ◆ B r a k e ◆
  
- ◆ F l a t s ◆
- ◆ R o u n d s ◆
- ◆ A n g l e s ◆

TIGHT ◆ SMOOTH ◆ DEPENDABLE



# 60 TON IRONWORKER



## PUNCH

Maximum Capacity..... 1" dia. in 3/4" plate  
 Work Height ..... 37-1/2"

## FLAT BAR SHEAR

Maximum Width ..... 1/2" x 12" or 3/8" x 14"  
 Maximum Thickness ..... 3/4" x 4"  
 Maximum Round Capacity ..... 7/8"  
 Maximum Square Capacity..... 7/8"  
 Work Height ..... 34-3/4"

## ANGLE SHEAR

Maximum Size..... 4" x 4" x 3/8" or 3" x 3" x 1/2"  
 Work Height ..... 40"

## COPER/NOTCHER

Maximum Width ..... 2-1/2" x 5" x 1/4"  
 Maximum Thickness..... 2-1/2" x 4" x 3/8"  
 Work Height ..... 40-3/8"

## TOOLING OPTIONS & ACCESSORIES

Oversized Punching Assembly,	Back Gauge, Gauging Table,
Angle Notcher, Pipe Notcher,	Magnetic Squaring Arm,
Brake, Multi Shear, Rod Shear,	Pedestal Die Table, Magna Light,
241 Punch Assembly	Urethane Stripper
	Electric Stroke Control (shown)

## GENERAL SPECIFICATIONS

Rated Capacity..... 60 Ton  
 Throat Depth..... 7-1/2"  
 Open Height..... 8"  
 Shut Height..... 6-3/4"  
 Stroke ..... 1-1/4"  
 Electric Motor Standard..... 5 HP, 3 Phase, 208/240 v, 1725rpm, 14 amp  
 Electric Motor Option ..... 5 HP, 3 Phase, 440/480 v or 575 v, 7 amp  
 ..... 5 HP, 1 Phase, 208/240 v, 1725rpm, 26 amp  
 Hydraulic Pump Size..... 3-1/2 gpm - 1 stage  
 Valve Pressure..... 2800 psi  
 Reservoir..... 7 gallons  
 Cylinder ..... 2-1/2" ram  
 Dimensions: base ..... 36" x 42-1/2"  
 height ..... 59"  
 shipping weight ..... 2475 pounds